



SSF/SSH1505 V2

15" Resizing LCD, 1000 nits LED backlight, 1280x242 ultra wide aspect ratio 16:3

SSF/SSH1505 V2 is an innovative ultra-wide, sunlight readable, LED backlight LCD display. It provides LCD panel with specific ratios for digital signage, public transportation, exhibition hall, department store, vending machine and industrial applications. Incorporating with A.D. control board and backlight design, it is high brightness and sunlight readable panel, can display high-quality video with energy-efficient.

Key Features

- Resizing LCD
- Ultra Wide Screen (16 : 3)
- Sunlight Readable
- LED Backlight
- High Brightness 1000 nits
- Low Power Consumption
- High Uniformity (90%)
- Wide Dimming
- Life Expectancy (70,000hrs)
- Slim Bezel



Specifications

V1

Model No.	SSF/SSH 1505 V2
Description	15.0" Resizing LCD, 1000 nits LED backlight, 1280x242
Display Area	376.3 x 71.2 mm
Brightness	1,000 cd/m ²
Resolution	1280 x 242
Aspect Ratio	16 : 3
Contrast Ratio	1000:1
Pixel Pitch (mm)	0.294 x 0.294
Viewing Angle	+80°~-80°(H), +85°~-85°(V)
Display Colors	16.7M
Response Time (Typical)	5 ms
Sync	LVDS
Power Consumption	9 W / 12W
Dimensions (mm)	396 x 94.2 x 12.2
Weight (Net)	0.83 Kg
LED Driving Board	LID15A
Control Board (Optional)	AD2662GDMR
<input type="checkbox"/> AD2662GDMR	VGA +DVI +RS232
<input type="checkbox"/> Others	
F / R Control Button	<input type="checkbox"/> 5 Key <input type="checkbox"/> 4 Key
<input type="checkbox"/> 5 Key	Power Switch, Menu, Select (+,-), Auto
<input type="checkbox"/> 4 Key	Power Switch, Menu, Select (+,-),
OSD Menu	Brightness, Contrast, H/V Position, Color, Phase, Clock...
Optional	<input type="checkbox"/> AOT <input type="checkbox"/> Touch Screen

Specifications are subject to change without notice.

All brands or product names are trademarks or registered trademarks of their respective companies.

SSF= Panel+ LED Driving Board

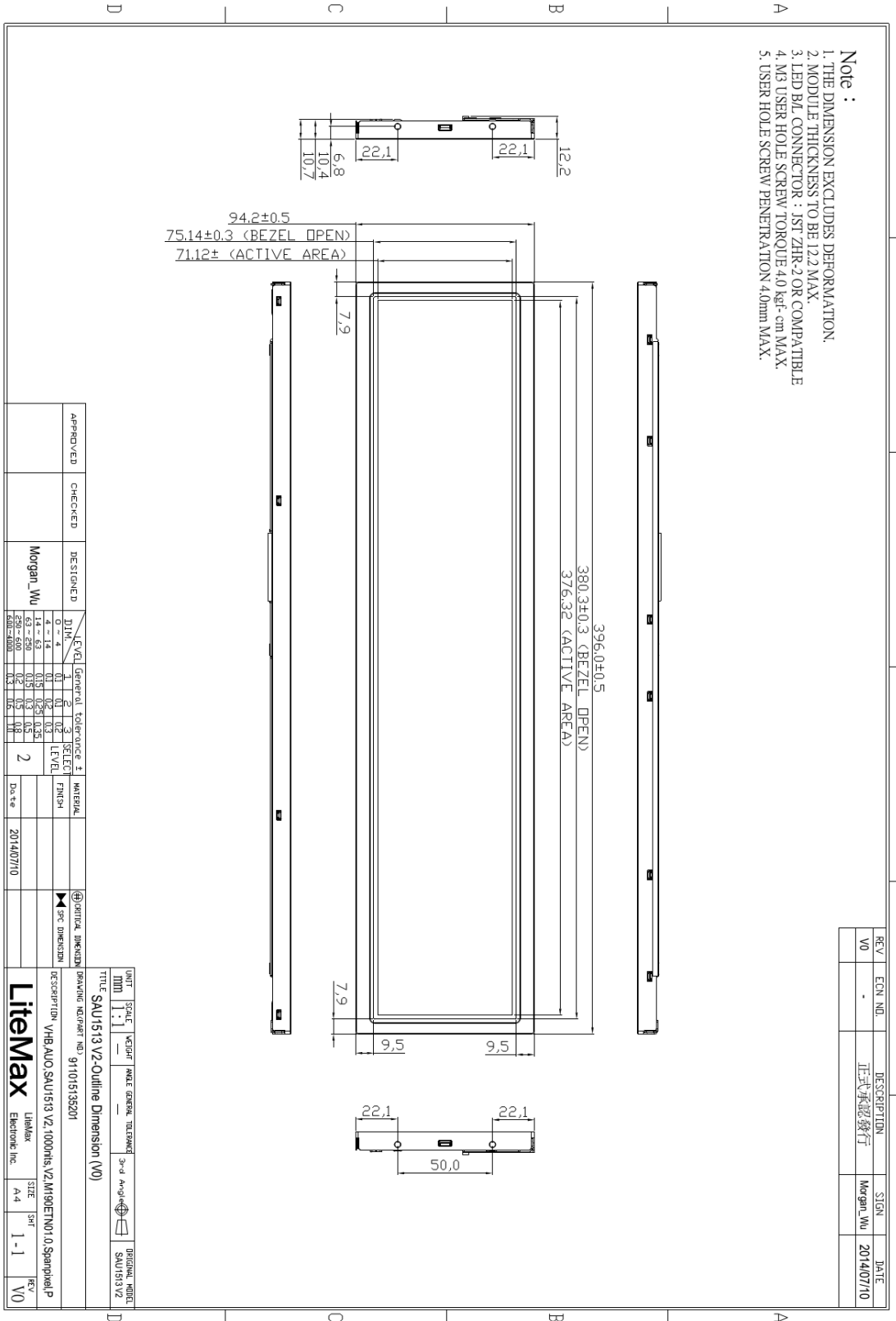
SSH= Panel+ LED Driving Board + Control Board



Mechanical Drawing

Outline Dimensions

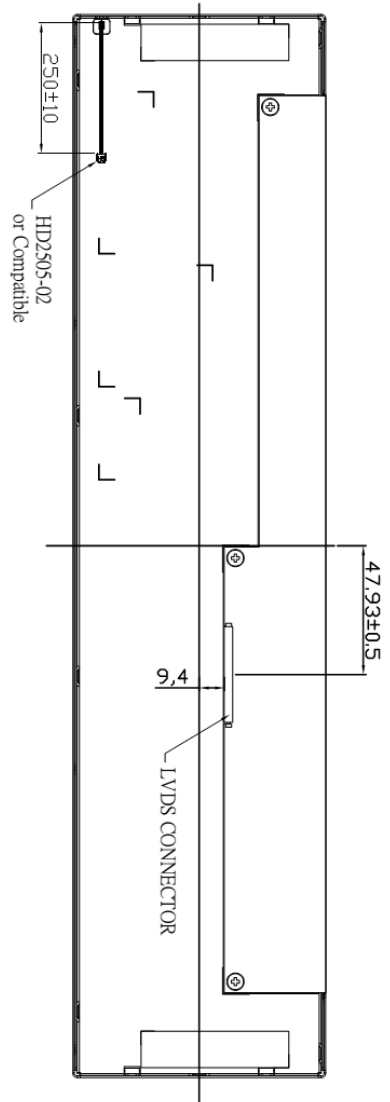
Unit: mm





REV	ECON. NO.	DESCRIPTION	SIGN.	DATE
V0	-	正式承認發行	Morgan_Wu	2014/07/10

- Note :**
1. THE DIMENSION EXCLUDES DEFORMATION.
 2. MODULE THICKNESS TO BE 12.2 MAX.
 3. LED B/L CONNECTOR : JST ZHR-2 OR COMPATIBLE
 4. M3 USER HOLE SCREW TORQUE 4.0 kgf·cm MAX.
 5. USER HOLE SCREW PENETRATION 4.0mm MAX.



APPROVED	CHECKED	DESIGNED	LEVEL	General Tolerance	SELECT	MATERIAL	DATE
		Morgan_Wu	1	0 ~ 4	1		2014/07/10
			2	4 ~ 14	2		
			3	14 ~ 50	3		
			4	50 ~ 250	4		
			5	250 ~ 500	5		
			6	500 ~ 1000	6		

UNIT: mm SCALE: 1:1 TITLE: SAU1513 V2-Outline Dimension (V0)

DESCRIPTION: VHB.AUO.SAU1513 V2.1000units.V2.M190ETN01.0.Spanhelp

LiteMax LIBMAX SIZE: A4 SH: 1-1 REV: V0

Electronic Inc.



Ordering Information

Model Name	Description
SSF1505-ENN-A11	15",1000ints,1280*242,LID15.AD2662GDMR,O/B,DC 12V,V02
SSH1505-ENN-G11	15",1000nits,1280*242,LID15.AD2662GDM,DC12V,V02
SSH1505-ENN-G12	15",1000nits,1280*242,LID15.AD2662GHM,DC12V,V02

Optional Accessories

Part Number	Description
840612051210	ADAPTER,AC/DC,12V/5.4A,65W,Atech OEM A065112-TDx.4P SLIDING CAP,P
810618301010 (Optional)	CABLE.POWER.AC.1830mm.(US Type).3PIN PLUG TO SOCKET.SVT(SPT-2)18AWG 3C BLACK,P.
810618301090 (Optional)	CABLE,POWER,AC,1830mm.(EU Type) 3PIN PLUG TO.SOCKET,H05VV-F 3G.0.75MMSQ BLACK,P
810618301050 (Optional)	CABLE,POWER,AC,1830mm.UK(FUSE) 3PIN PLUG TO.SOCKET,H05VV-F 3C(3G) 0.75MMSQ BLACK,P
810618301170 (Optional)	CABLE.POWER,AC,1830mm(AU Type)3PIN PLUG TO 2P SOCKET.LTSA 0.75MMSQ BLACK,P
810618301030 (Optional)	CABLE.POWER.AC.1830mm.(JP Type).2PIN PLUG Y TERMINAL TO. SOCKET.VCTF 3C 0.75MMSQ BLACK,P